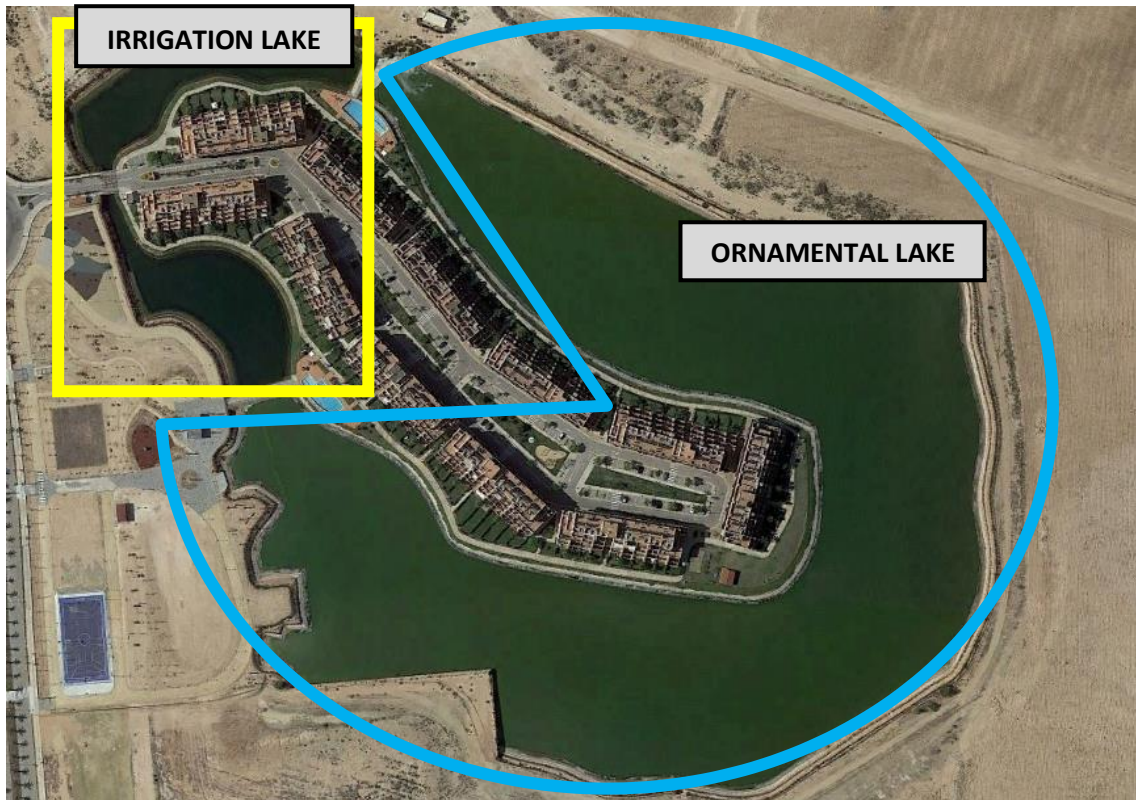
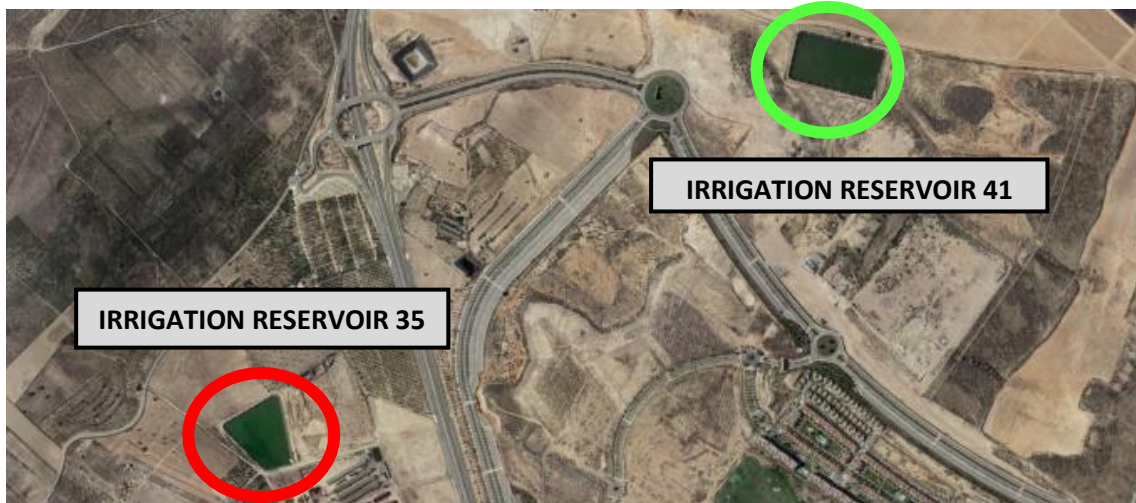


INTRODUCTION

In order to provide more information and to be able to better study and plan irrigation frequencies in the future in the face of possible water restrictions, this report has been prepared, which shows the historical data recorded during October of 2020.

IRRIGATION RESERVOIRS AND ORNAMENTAL LAKE

By way of explanation, 2 location plans of the different ponds and lakes included in this report are included:

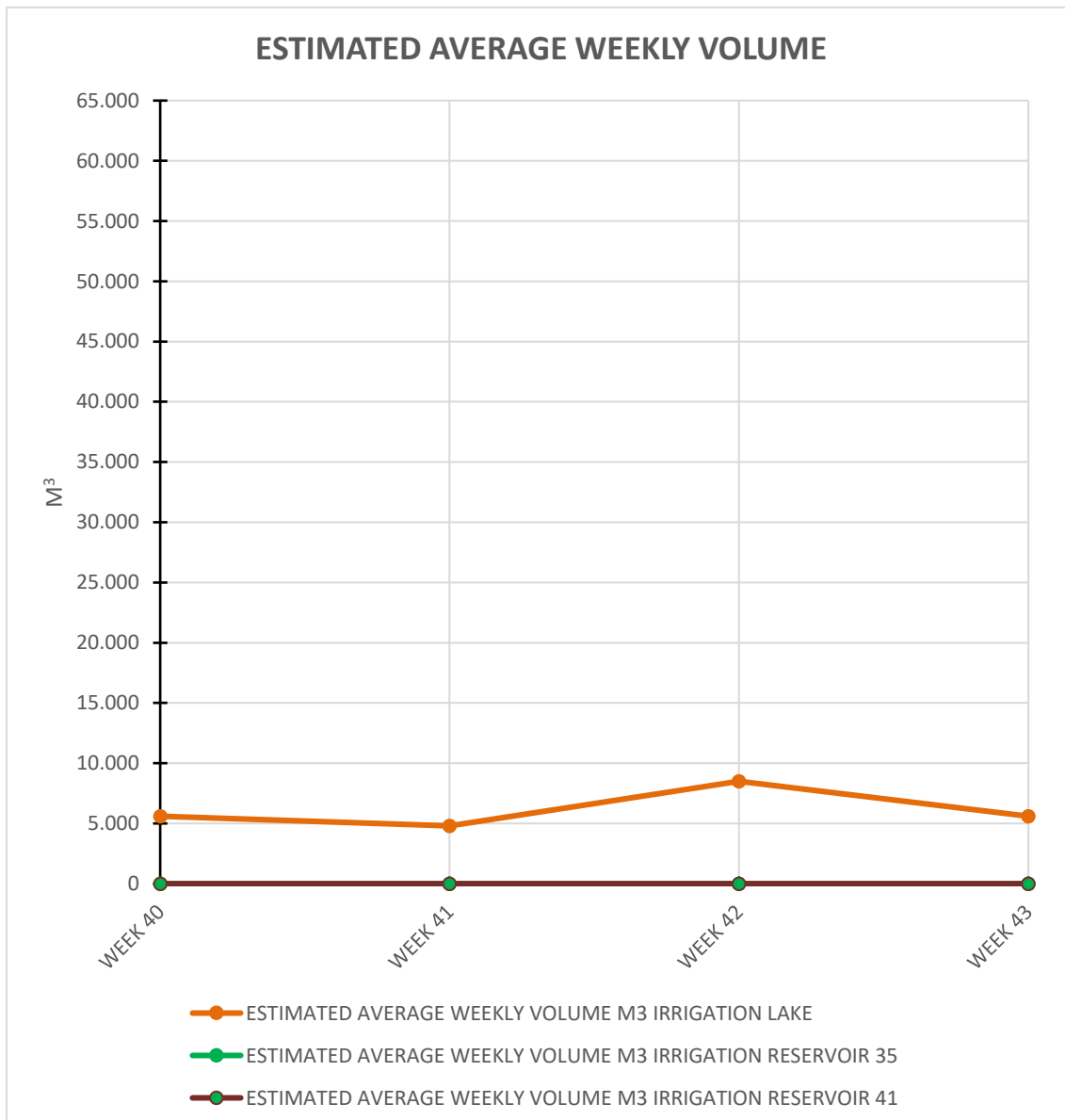


1. VOLUMES

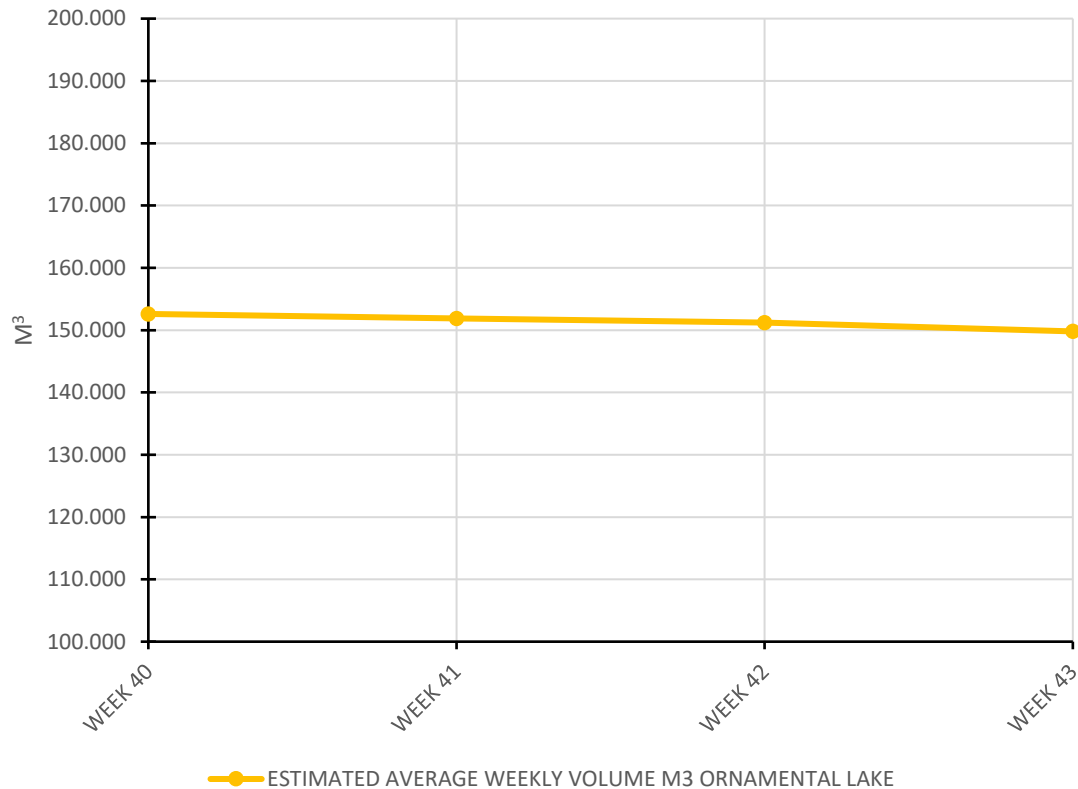
Below are the average data, recorded during October of 2020, about the state of the capacities of the irrigation reservoirs, as well as the ornamental lake:

ESTIMATED AVERAGE WEEKLY VOLUME M ³					
DATE		IRRIGATION LAKE	ORNAMENTAL LAKE	IRRIGATION RESERVOIR 35	IRRIGATION RESERVOIR 41
OCTOBER	WEEK 40	5.600	152.600	0	0
	WEEK 41	4.800	151.900	0	0
	WEEK 42	8.500	151.200	0	0
	WEEK 43	5.600	149.800	0	0

With the data obtained, 2 graphs have been prepared, one to visualize the evolution of the weekly average volume of the different irrigation ponds and the other to visualize the evolution of the weekly average volume of the ornamental lake during this period:



ESTIMATED AVERAGE WEEKLY VOLUME



2. DEPTHS

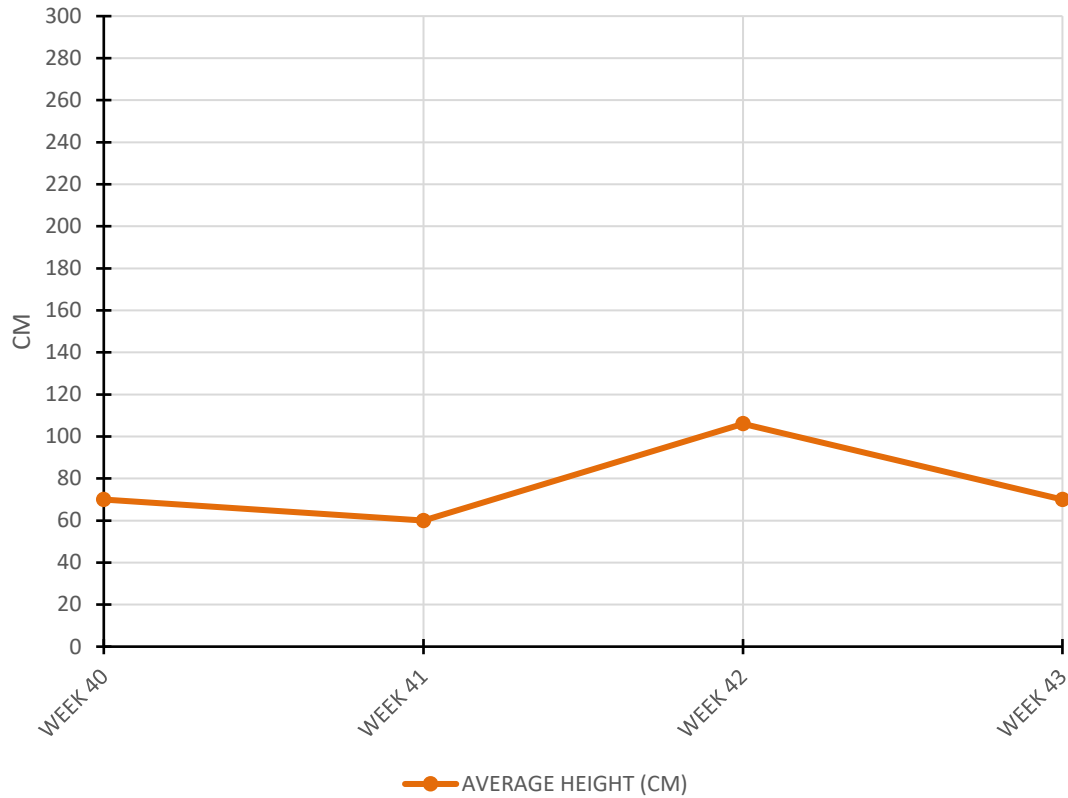
In turn, the measures of the depth of the irrigation lake and the ornamental lake have also been compiled, as well as evaporation throughout October of 2020:

PROFUNDIDAD MEDIA LAGO DE RIEGO (CM)			
	FECHA	ALTURA MEDIA (CM)	EVAPORACIÓN (CM)
OCTUBRE	SEMANA 40	70	2
	SEMANA 41	60	1
	SEMANA 42	106	1
	SEMANA 43	70	2

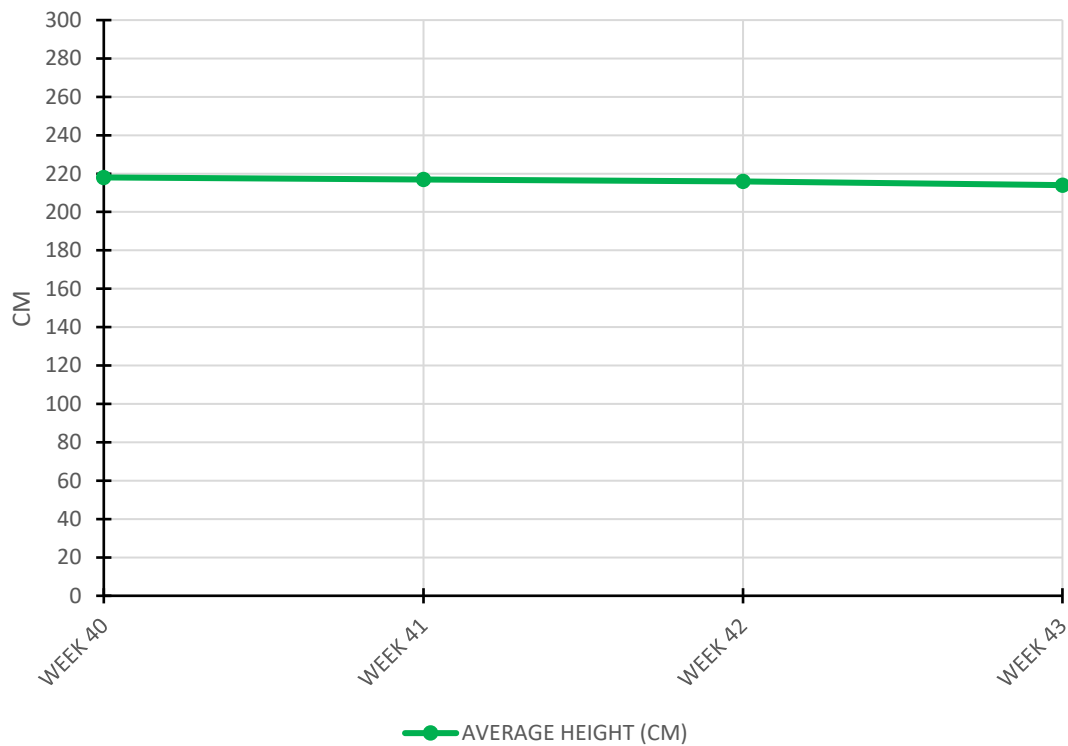
PROFUNDIDAD MEDIA LAGO ORNAMENTAL (CM)			
	FECHA	ALTURA MEDIA (CM)	EVAPORACIÓN (CM)
OCTUBRE	SEMANA 40	218	2
	SEMANA 41	217	1
	SEMANA 42	216	1
	SEMANA 43	214	2

In the same way, the measurements of the depth of the irrigation lake and the ornamental lake have also been compiled, as well as evaporation throughout October of 2020:

IRRIGATION LAKE AVERAGE DEPTH



ORNAMENTAL LAKE AVERAGE DEPTH

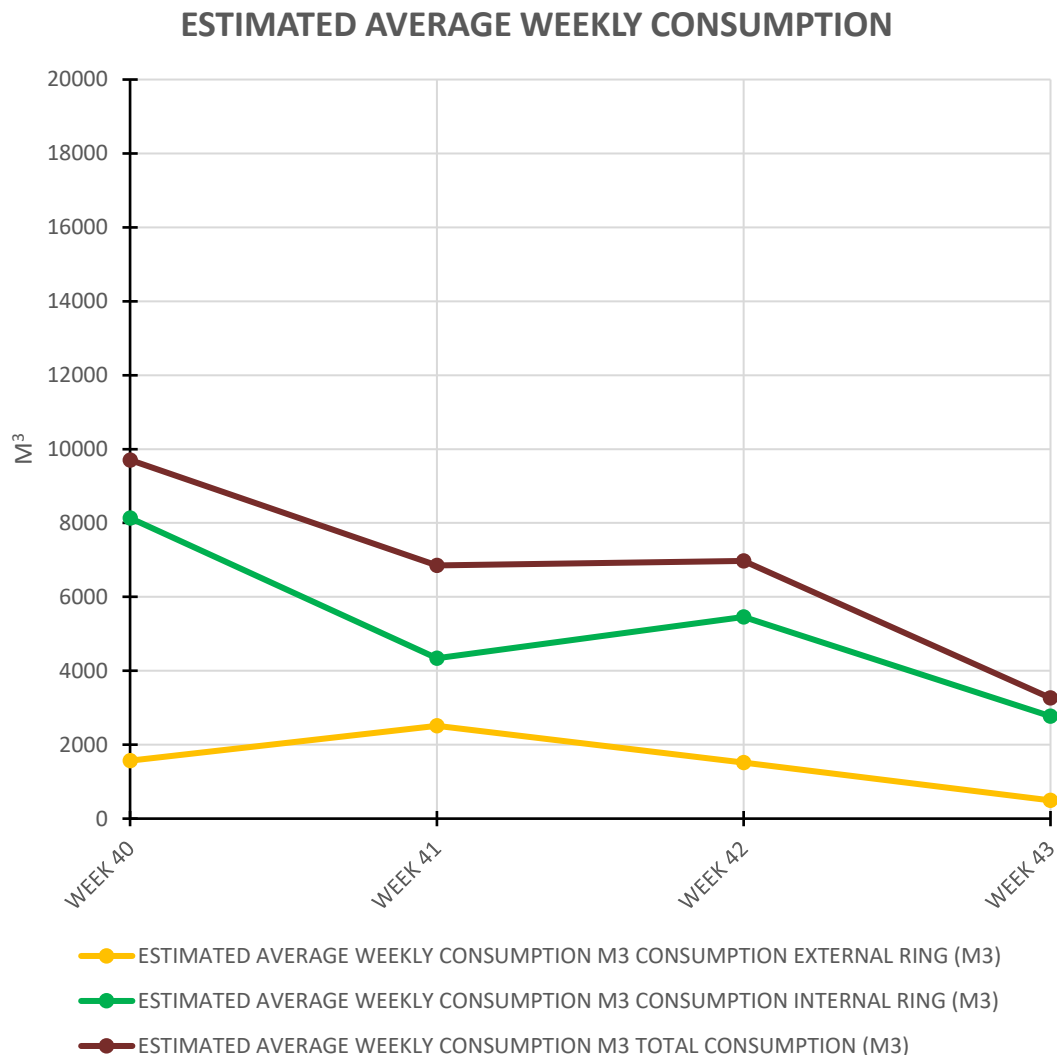


3. CONSUMPTIONS

On the other hand, the average data recorded during October of 2020, about the weekly consumption of the outer ring, inner ring and the total sum of both are shown here. In addition, the rainfall recorded throughout this period is also shown.

ESTIMATED AVERAGE WEEKLY CONSUMPTION M ³					
	DATE	ACCUMULATED PRECIPITATION (L/M ²)	CONSUMPTION EXTERNAL RING (M ³)	CONSUMPTION INTERNAL RING (M ³)	TOTAL CONSUMPTION (M ³)
OCTOBER	WEEK 40	0	1571	8134	9705
	WEEK 41	0	2511	4339	6850
	WEEK 42	0	1516	5458	6974
	WEEK 43	3	494	2770	3264

Likewise, a graph has been prepared to better visualize the evolution of the average weekly consumption of irrigation in the outer ring, as well as in the inner ring and the total sum of both throughout this period:



IRRIGATION TIMES AND FREQUENCIES

The current weekly irrigation times and frequencies (November) are shown below:

IRRIGATION TIMES NOVEMBER	OUTER RING		INNER RING
	1 day per week <i>(lawn areas)</i>	2 days per week <i>(new landscape)</i>	2 days per week <i>(lawn areas)</i>
Sprinkler irrigation (platforms and / or landscaping)	10 minutes	-	10 minutes
Sprinkler irrigation (houses)	-	-	3 - 4 minutes
Underground irrigation (central reservation, roundabouts and landscapes)	10 minutes	12 minutes	10 minutes
Underground irrigation (tree strips)	-	15 minutes	10 minutes

***NOTE:** All waterings are made from the end of the afternoon until the early hours of the morning, taking place during the night.

IRRIGATION TIMES NOVEMBER	PENTHOUSE PLANTERS	LA ISLA PLANTERS
		3 days per week
Drip irrigation	7 minutes	7 minutes

***NOTE:** All waterings are made from the end of the afternoon until the early hours of the morning, taking place during the night.

From Monday 16th of November, the irrigation of the lawn areas and trees strips will stop, it will only be maintained on the new landscaping areas (1 day/week) and on the Penthouses and La Isla planters (3 days/week).

CHLORINE CONSUMPTION IN POOLS

In order to improve the information about the chlorine consumption and costs, from STV Gestión we have implemented a new monitoring and monthly control for swimming pools in order to obtain more and precise data.

Thus, here is a table that collects this information:

OCTOBER CONSUMPTION					
	POOL	CHLORINE TABLETS (Kg)	GRANULATED CHLORINE (Kg)	CHLORINE LIQUID (L)	ACID (L)
LA ISLA	LI 2-3	0,0 Kg	0,0 Kg	92,0 L	12,0 L
	LI 9-10	0,0 Kg	0,0 Kg	30,0 L	0,0 L
NARANJOS	N2	9,6 Kg	0,0 Kg	0,0 L	0,0 L
	N4	8,0 Kg	0,0 Kg	0,0 L	0,0 L
	N5	8,0 Kg	0,0 Kg	0,0 L	0,0 L
	N6	8,0 Kg	0,0 Kg	0,0 L	0,0 L
	N7	6,4 Kg	0,0 Kg	0,0 L	0,0 L
	N8	6,4 Kg	0,0 Kg	0,0 L	0,0 L
PENTHOUSES	PH 2-3	6,4 Kg	0,0 Kg	0,0 L	0,0 L
	PH 5-6	6,4 Kg	0,0 Kg	0,0 L	0,0 L
	PH 9-10	9,6 Kg	0,0 Kg	0,0 L	0,0 L
	PH 12-13	6,4 Kg	0,0 Kg	0,0 L	0,0 L
JARDINES	J1	8,0 Kg	0,0 Kg	0,0 L	0,0 L
	J2	8,0 Kg	0,0 Kg	0,0 L	0,0 L
	J3	8,0 Kg	0,0 Kg	0,0 L	0,0 L
	J4	8,0 Kg	0,0 Kg	0,0 L	0,0 L
	J5	8,0 Kg	0,0 Kg	0,0 L	0,0 L
	J7	16,4 Kg	0,0 Kg	0,0 L	0,0 L
	J8	14,6 Kg	0,0 Kg	0,0 L	0,0 L
	J9	8,0 Kg	0,0 Kg	0,0 L	0,0 L
	J10	8,0 Kg	0,0 Kg	20,0 L	0,0 L
	J11	9,6 Kg	0,0 Kg	0,0 L	0,0 L
	J12	9,6 Kg	0,0 Kg	0,0 L	0,0 L
	J13	16,4 Kg	0,0 Kg	0,0 L	0,0 L

TOTAL CONSUMPTION	197,8 Kg	0,0 Kg	142,0 L	12,0 L
--------------------------	-----------------	---------------	----------------	---------------

COST	719,99 €	0,00 €	96,915 €	5,88 €
-------------	-----------------	---------------	-----------------	---------------

TOTAL COST	822,79 €			
-------------------	-----------------	--	--	--

**V.A.T. not included*